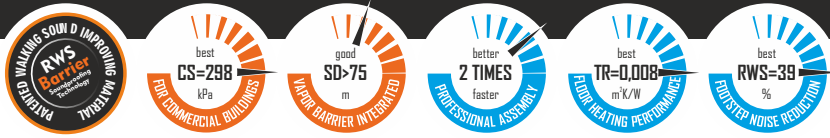


ExtremeALU Heat

Permanently elastic, heavy underlay with patented RWS Barrier base material, specially developed for heated floors.



RWS Barrier base material defines a new standard for the highest walking noise improvement value. All tests were conducted by the EPH GmbH.

In addition to laboratory tests, end-user experience was confirmed in real life conditions as RWS performance compared to other premium range underlays on the market.

Product compatibility

- ✓ Commercial laminate and engineered floors.

Product highlights

- ✓ Outstanding floor heating compatibility.
- ✓ Unrivaled walking sound improvement (RWS), thanks to RWS Barrier.
- ✓ Integrated vapor barrier.



Innovation and quality made in Poland. Since 2007.

Member of



rev. 04/2022

ITB-KOT-2019/0252.



Brandverhalten: normalentflammbar (Klasse E/ef) nach DIN EN 13501-1 oder Baustoffklasse DIN 4102-B2) Emissionsgeprüftes Bauprodukt nach DIBt-Grundsätzen.



Symbol	Category	Value/Unit	Test methods
T	Thickness	2,0 mm ±10%	EN823
L	Length	8 000 mm ±4%	EN822
W	Width	1 000 mm ±2%	EN822
AW	Area weight	1,70 kg/m ² ±10%	EN ISO 23997:2012
QW	Density	875 kg/m ³ ±10%	EN ISO 23996:2012
RWS	Reflected walking sound	39 % ±2	IHD-W431
IS	Impact sound reduction	18 dB ±2	EN 16354:2018
CS	Temporary loads resistance	298 kPa ±10	EN 16354:2018
CC	Static loads (furniture) resistance	>50 [*] kPa	EN 16354:2018
DL	Dynamic loads (walking) resistance	>100 000 [*] cycles	EN 16354:2018
PC	Local unevenness compensation	1,10 mm ±10%	EN 16354:2018
TR	Thermal insulation	0,008 m ² K/W ±0,003	EN 16354:2018
SD	Protection against moisture	>75 [*] m	EN 16354:2018
RLB	Protection against falling objects	800 mm ±50	EN 16354:2018
RTF	Reaction to fire	E _n	EN-ISO11925-2,PN-EN13501-1

Logistic Parameter	Sales unit	Packaging	Palette
Form	Roll	---	Corrugated box
Quantity	1 Pc.	---	35 Rolls
Area	8m ²	---	280m ²
Weight	13,6kg ± 10%	---	476kg ± 10%

General information

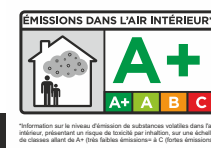
All data are based on our experience and careful investigations. The diversity of the materials used, as well as the different construction site and processing conditions, can not be examined or influenced by us in detail. The quality and function therefore depends on the expert site evaluation and product use. In case of doubt, carry out your own tests or seek advice on our application technology. When processing, please observe the rules of technology as well as the manufacturing specifications of the building materials involved and constantly changing state of technology. Due to its composition and technology of production, this product may have a residual smell of natural rubber that disappears right after the assembly of the floor. This product has been tested and does not emit volatile organic compounds (VOC class A+).

Storage

Approx. 1 year, protecting from direct sunlight or other weather influences.

Application

Unroll underlay on the floor, aluminumized side facing up, with individual panels adjacent to one another and seal the joints with aluminum sealing tape. Product informations may change without notice. Please visit our webpage for updated product informations.



EXTREME line

www.fairunderlay.com